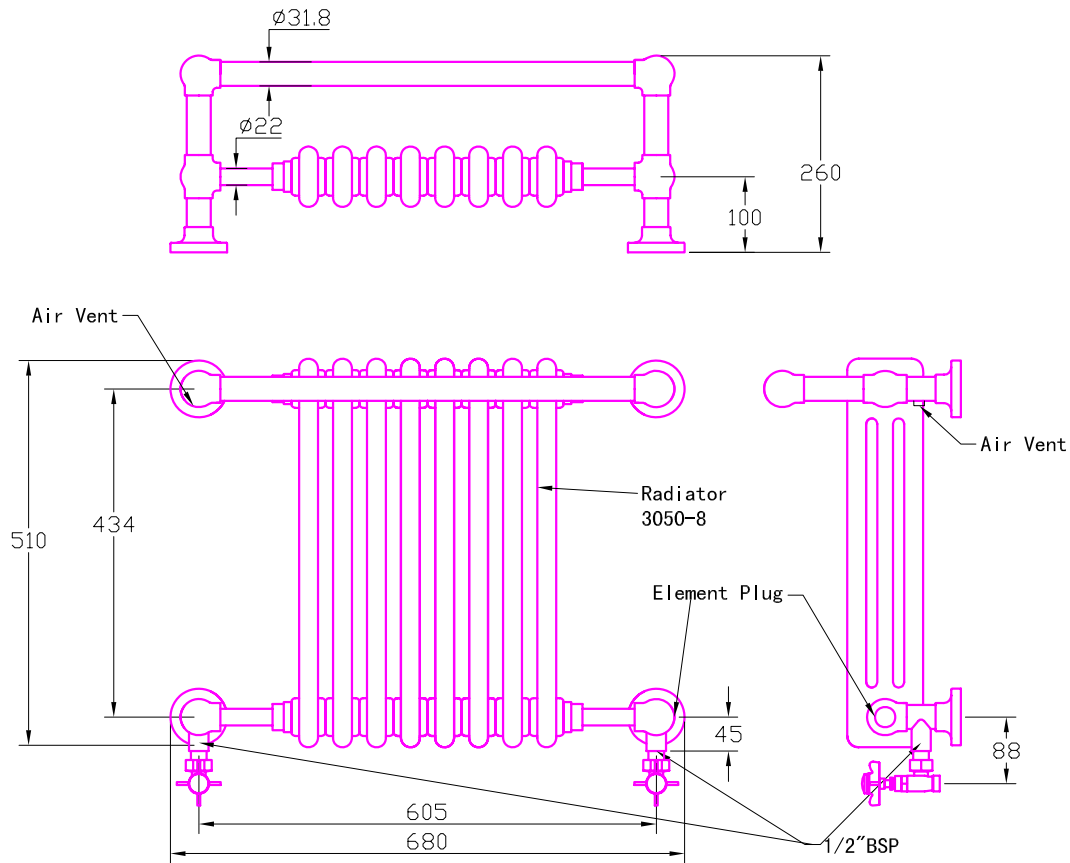


COLN SJTR4000



1	Electrical Earth Connection Fitted
2	Packing: Moulded Polystyrene Inner Protection And White Carton Outer System
3	This Product Is Manufactured In ISO9001 Accredited Establishment
4	Screws, Masonry Plugs, Vent Key, Allen Key and Fitting Instructions Included
5	Product Serial number And Date Of Manufacture Impressed In Top RH Flange
6	Brass Tube Specification: $\phi 31.8 \times 1.00$ mm
7	Product Test Pressure: 11 bar
8	Size Variation: A 1% Size Variation Is Possible
9	Warranty: 5 Years From Date Of Manufacture (Material and Workmanship)
10	NW/GW: 14.5kg / 17.4kg
11	Tapping: 1/2" BSPT
12	Heat Output: 2942 BTU/HR (863 Watts)
13	Radiator paint colour column rad.: Ral 9010